

WPL 610

User Manual



*Lever for descent,
lift and air release*

Closing screw

*Manometer
max. 10 bar*

Movement holder

Hand valve

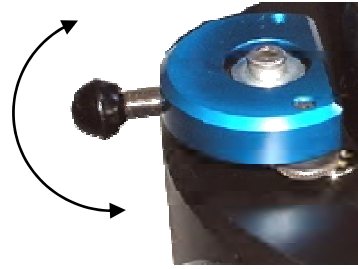


**Greiner Vibrograf
WPL 610**

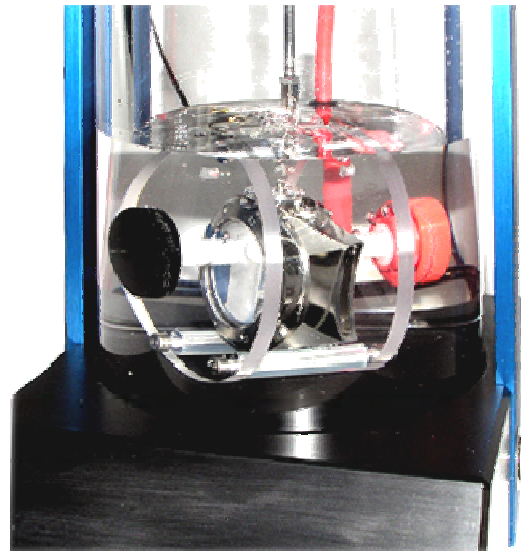
Left = release air

Middle = watch stays on top

Right = dipping



1. Turn the lever to the right:
The watch dives into the water.
The pressure in the cylinder.
decreases and the leak becomes
visible (Air-bubbles).



2. Turn lever to the middle:
The watch comes out of the water.

3. Turn lever to the left:
The pressure releases
from the cylinder.



Security regulations

No responsibility will be taken,
if the Instrument is not used within the security regulations.

*The WPL-610 is manufactured with tested
and high quality materials
and gives you a safe and satisfying result,
if you use it within the security regulations.*

These points are important and must be followed:

1. *Do not expose the instrument to direct sunlight.*
2. *Maximum allowed air pressure is 10 bar (10 atu)*
3. *The WPL-610 may not be connected to an air pressure container with a pressure higher than 10 bar.*
4. *The WPL-610 may be cleaned with water or soapy water only.*

